



BAJACALIFORNIA
GOBIERNO DEL ESTADO

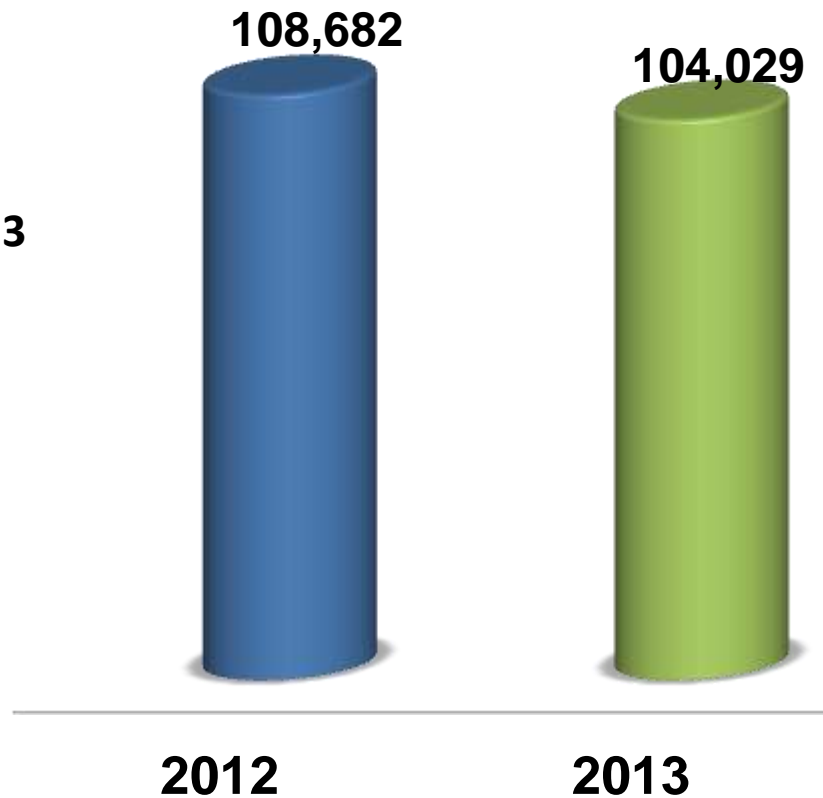


INCIDENCIA DELICTIVA

Periodo: Enero - Diciembre
2007-2013



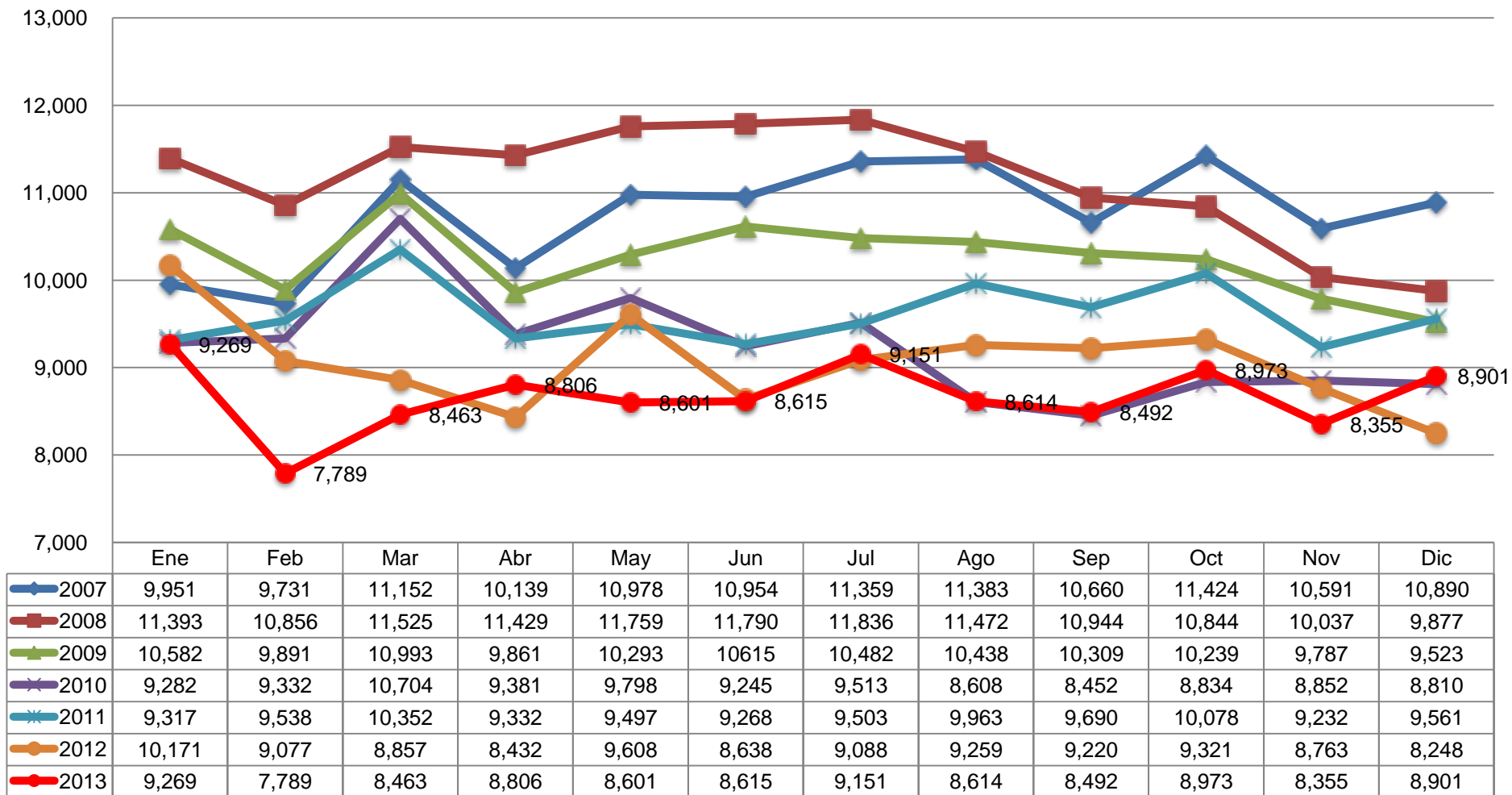
Variación
2012 vs 2013





ESTATAL

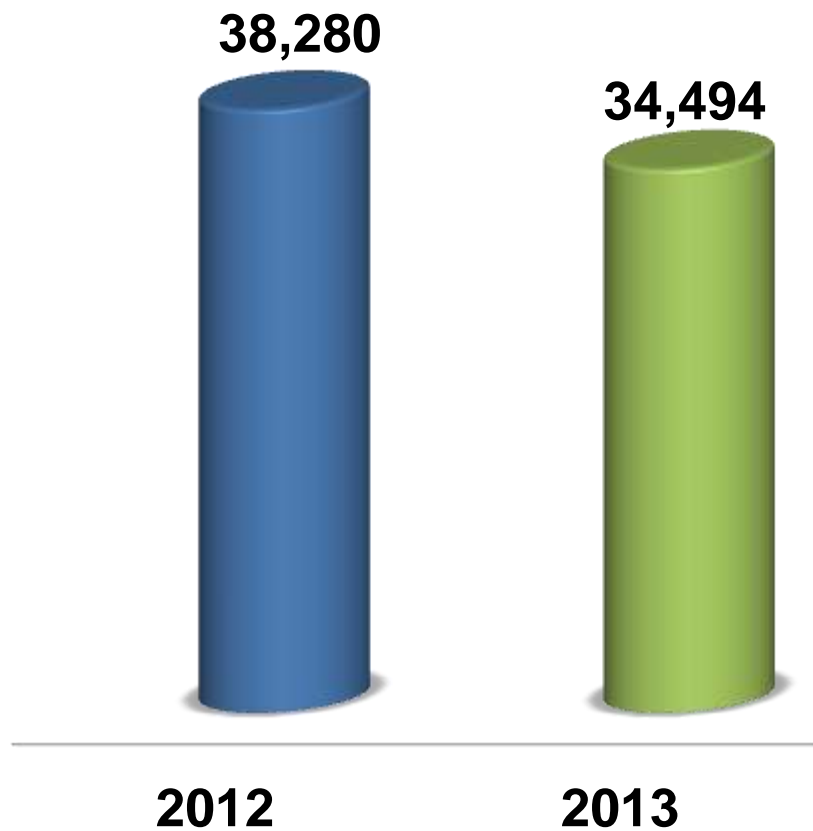
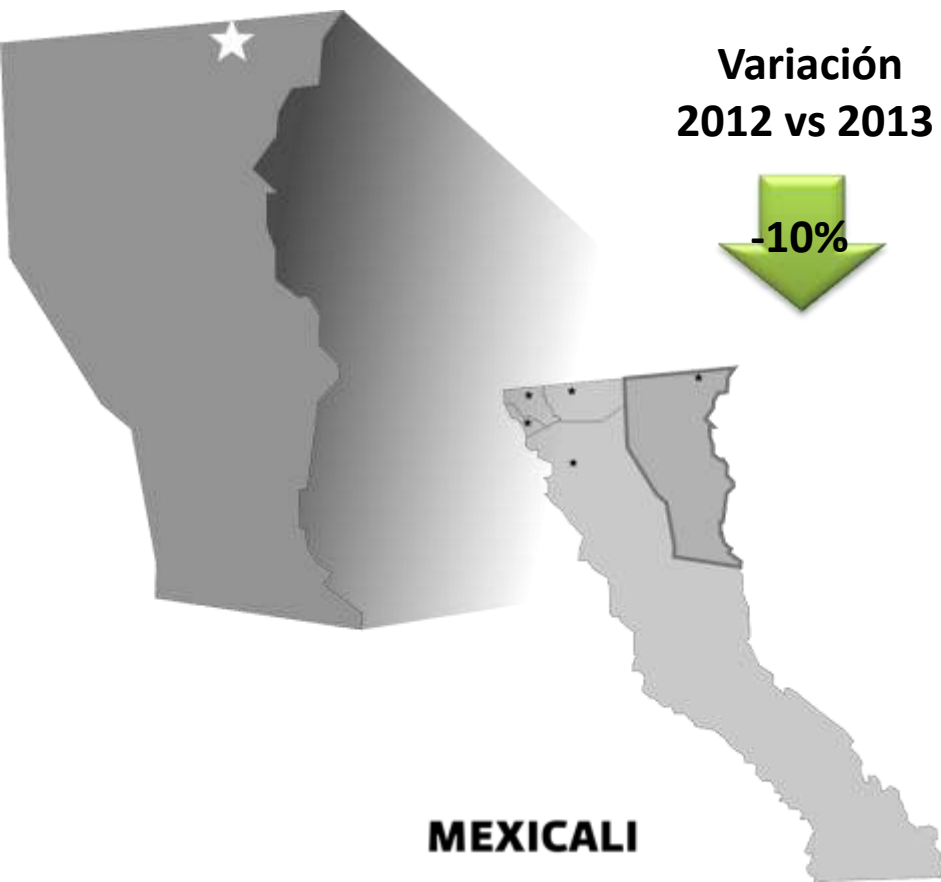
BAJACALIFORNIA





BAJACALIFORNIA

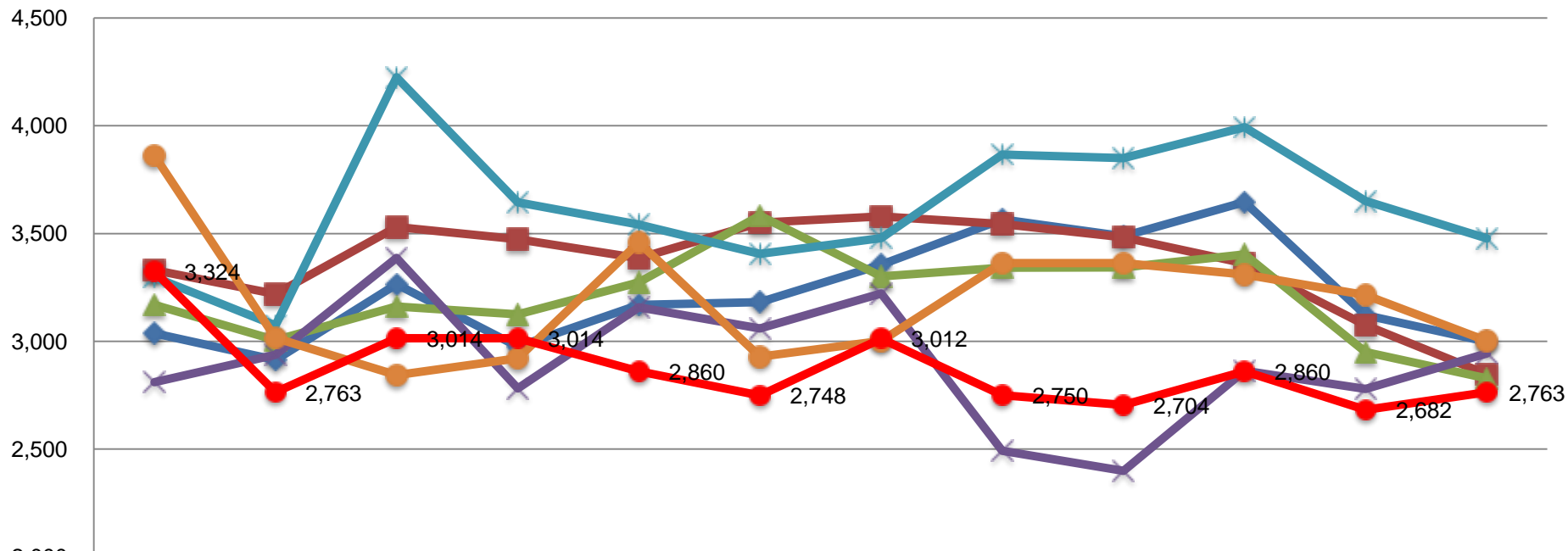
MEXICALI





MEXICALI

BAJACALIFORNIA



	Ene	Feb	Mar	Abr	May	Jun	Jul	Ago	Sep	Oct	Nov	Dic
2007	3,037	2,913	3,265	2,975	3,169	3,182	3,355	3,566	3,488	3,646	3,121	2,998
2008	3,330	3,219	3,530	3,474	3,386	3,551	3,579	3,544	3,483	3,362	3,074	2,847
2009	3,169	3,005	3,161	3,125	3,274	3,583	3,301	3,342	3,343	3,403	2,950	2,828
2010	2,810	2,937	3,387	2,781	3,157	3,059	3,222	2,491	2,398	2,863	2,779	2,944
2011	3,297	3,073	4,225	3,645	3,541	3,406	3,478	3,867	3,850	3,994	3,651	3,477
2012	3,862	3,015	2,843	2,921	3,458	2,928	3,002	3,363	3,363	3,310	3,214	3,001
2013	3,324	2,763	3,014	3,014	2,860	2,748	3,012	2,750	2,704	2,860	2,682	2,763



BAJACALIFORNIA

TIJUANA

Variación
2012 vs 2013



-2%

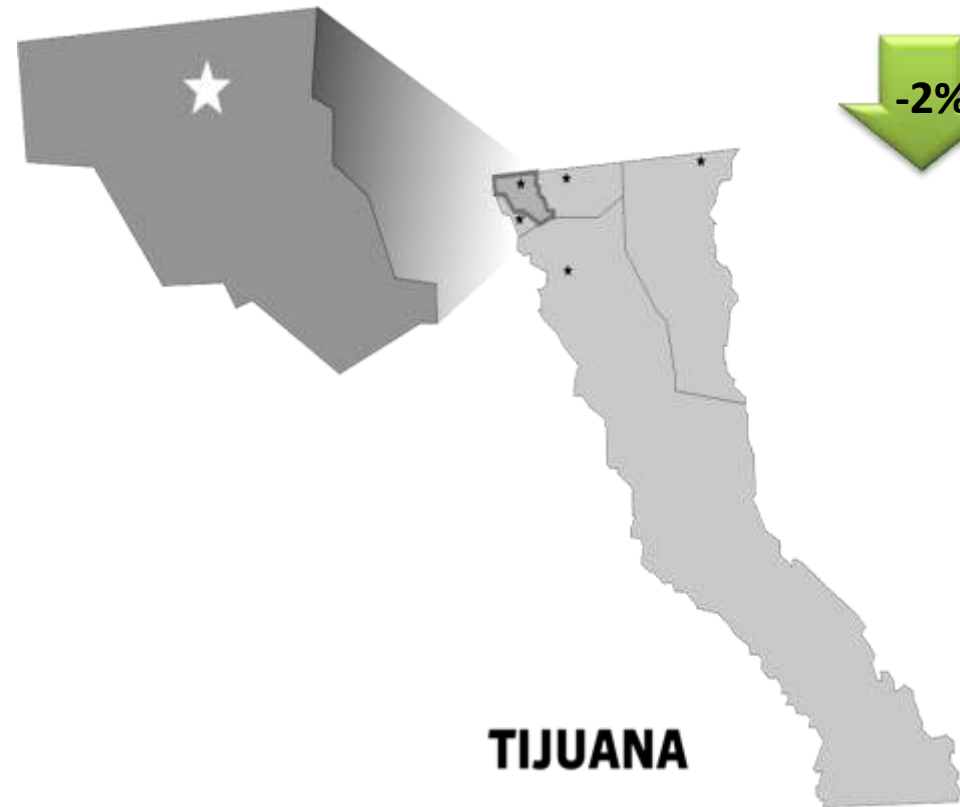
49,067

48,207

2012

2013

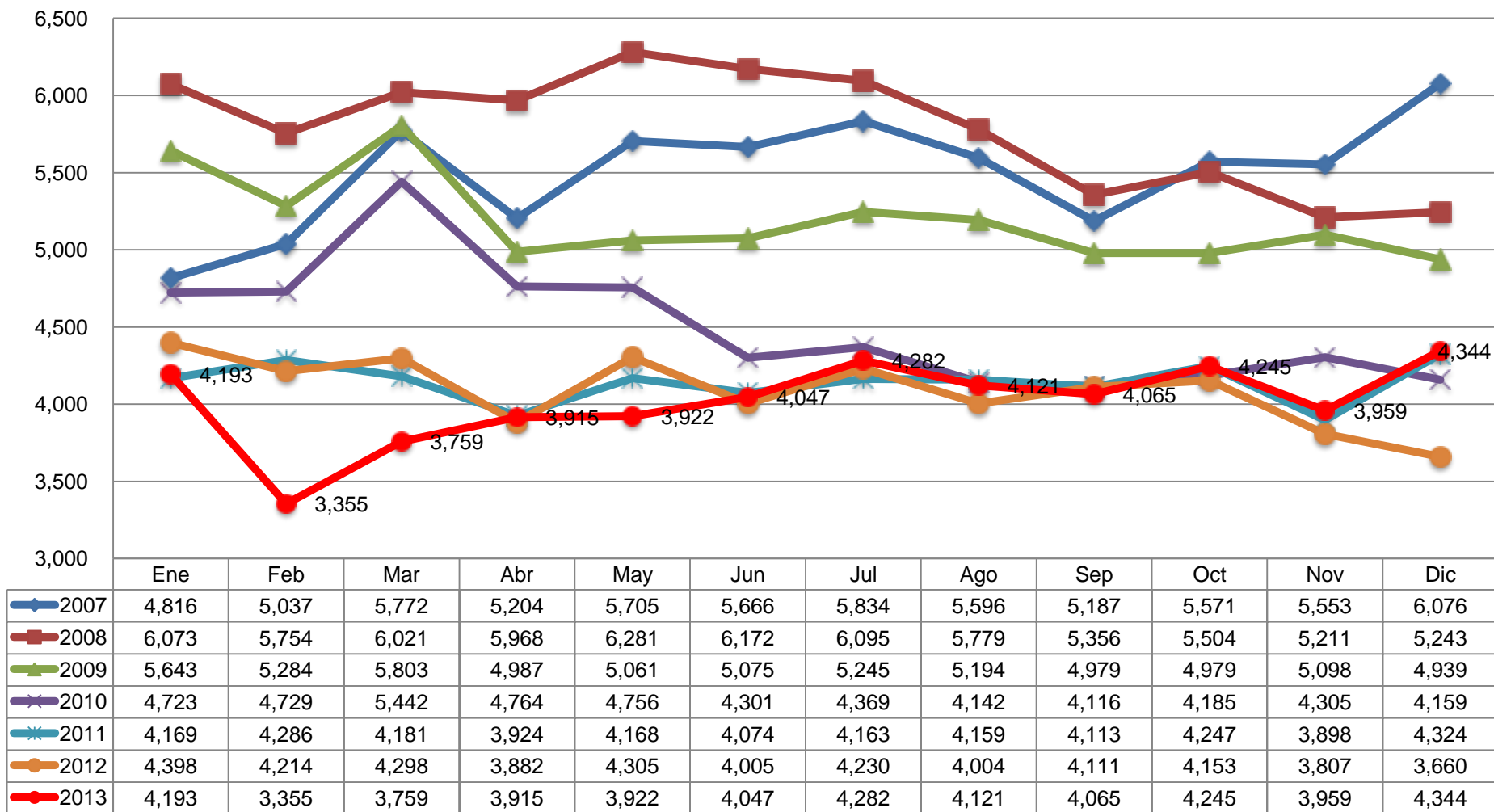
TIJUANA





TIJUANA

BAJACALIFORNIA

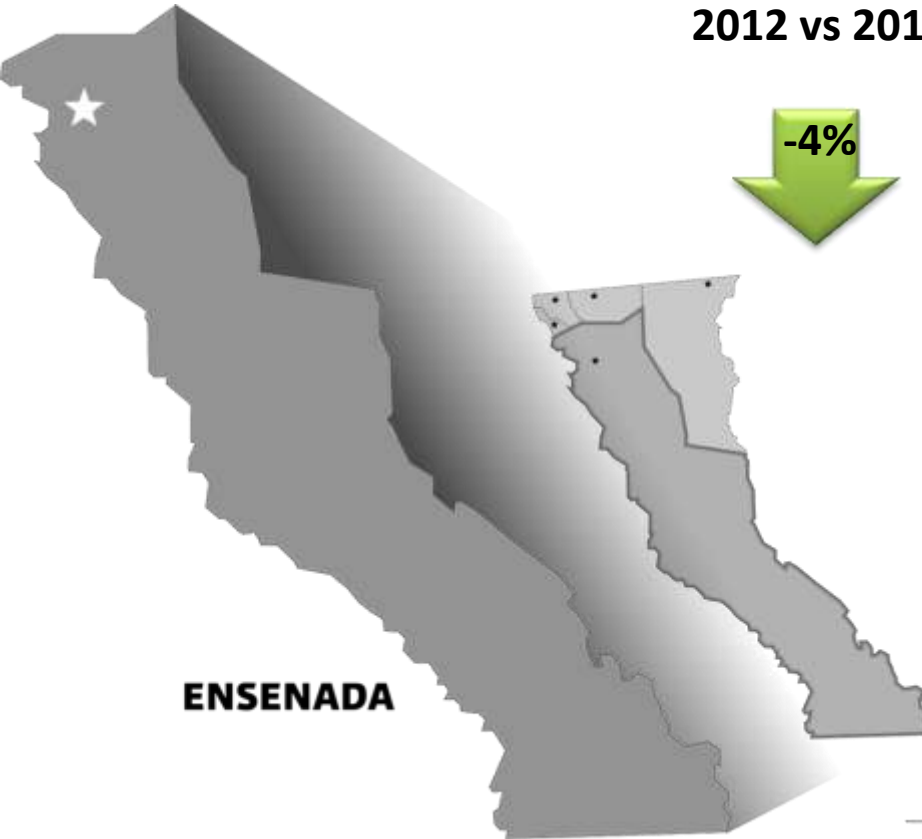




BAJACALIFORNIA

ENSENADA

Variación
2012 vs 2013



2012

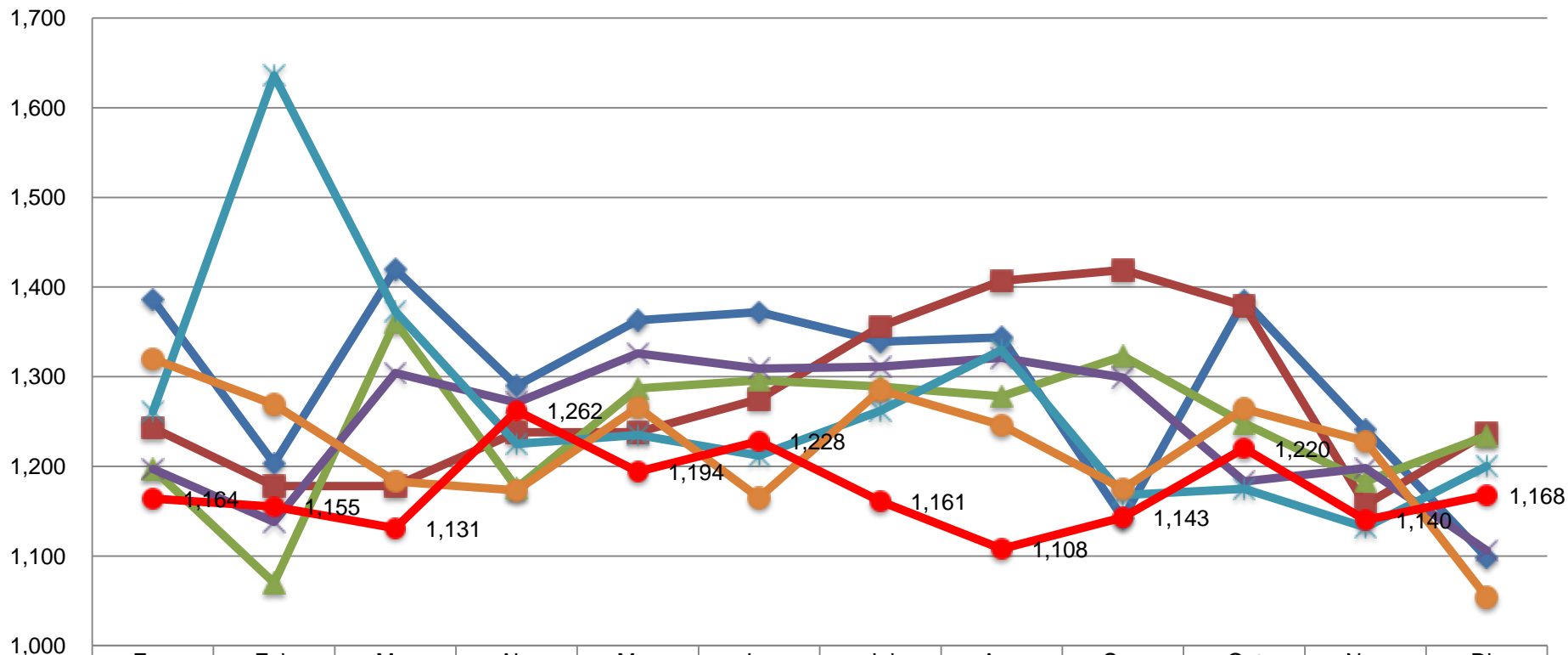


2013



ENSENADA

BAJACALIFORNIA

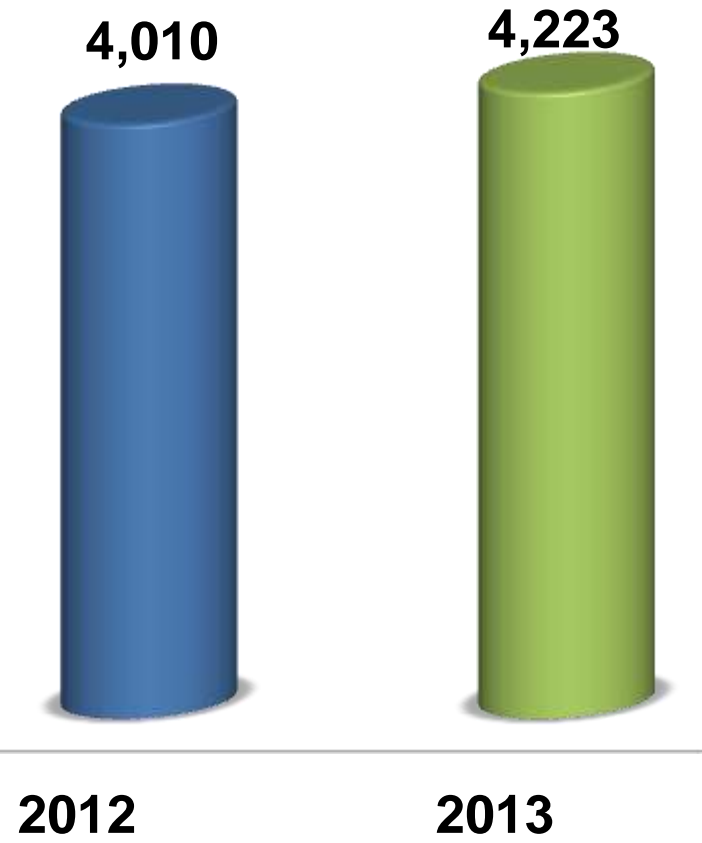
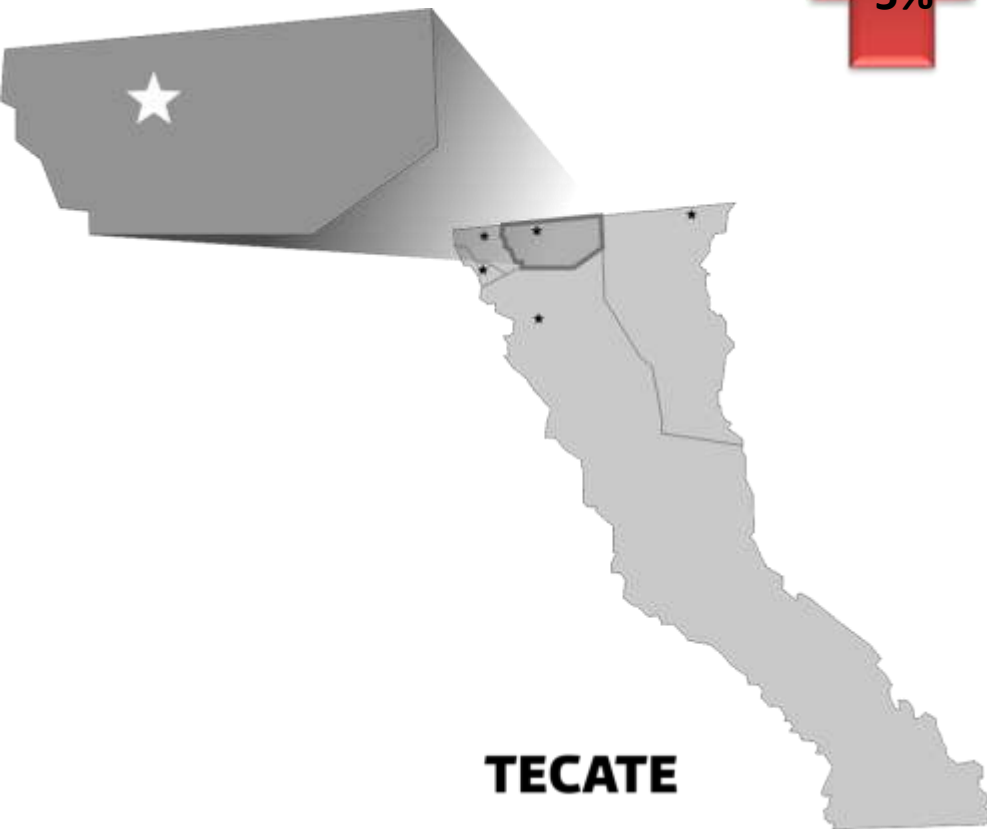


	Ene	Feb	Mar	Abr	May	Jun	Jul	Ago	Sep	Oct	Nov	Dic
2007	1,386	1,203	1,420	1,290	1,363	1,372	1,339	1,344	1,142	1,385	1,241	1,098
2008	1,243	1,178	1,178	1,238	1,238	1,275	1,356	1,407	1,419	1,379	1,157	1,237
2009	1,197	1,070	1,361	1,176	1,287	1,296	1,289	1,278	1,323	1,248	1,183	1,234
2010	1,197	1,138	1,304	1,271	1,326	1,309	1,311	1,321	1,299	1,183	1,198	1,106
2011	1,261	1,636	1,373	1,225	1,235	1,212	1,262	1,330	1,168	1,175	1,132	1,200
2012	1,320	1,269	1,183	1,173	1,266	1,165	1,285	1,246	1,175	1,264	1,228	1,054
2013	1,164	1,155	1,131	1,262	1,194	1,228	1,161	1,108	1,143	1,220	1,140	1,168

TECATE



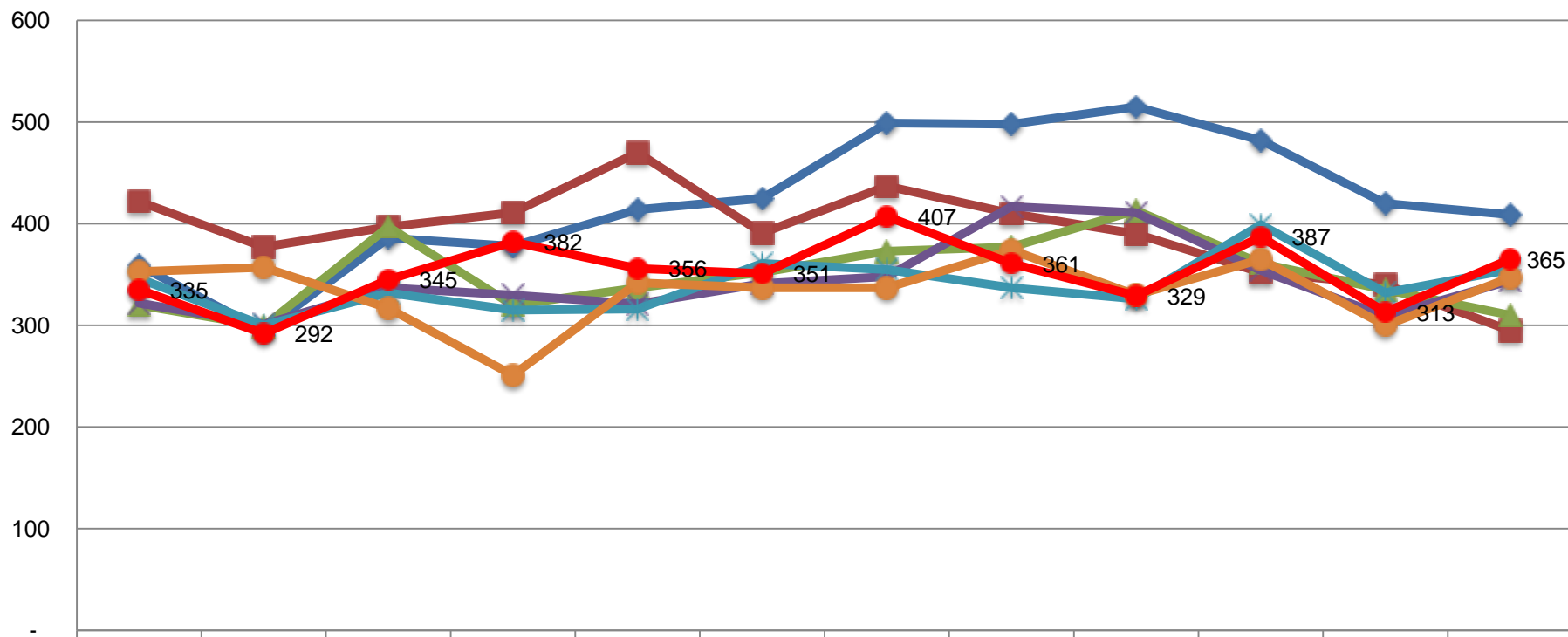
Variación
2012 vs 2013





TECATE

BAJACALIFORNIA



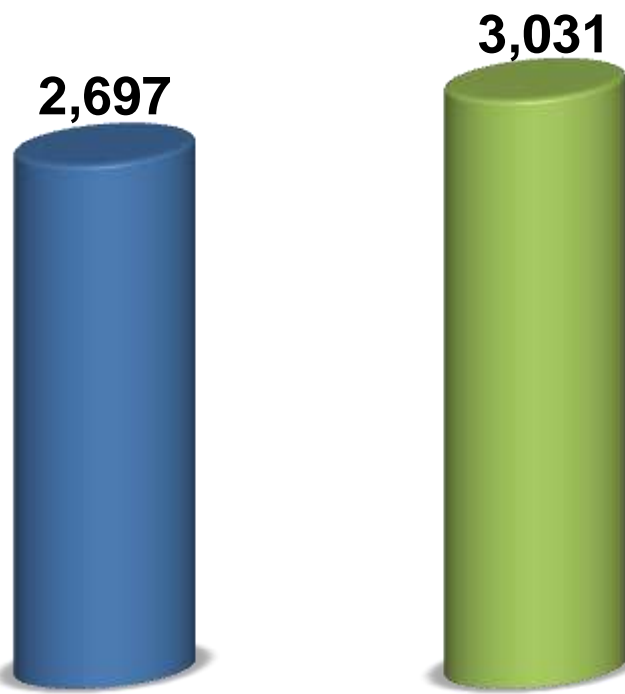
	Ene	Feb	Mar	Abr	May	Jun	Jul	Ago	Sep	Oct	Nov	Dic
2007	359	295	386	378	414	425	499	498	515	482	420	409
2008	422	377	397	411	470	391	437	410	390	352	340	295
2009	320	299	397	320	337	352	373	377	413	361	335	310
2010	322	301	337	330	321	341	348	417	411	354	309	344
2011	346	300	332	315	316	361	355	337	326	399	332	355
2012	353	357	317	251	342	337	337	374	330	365	300	347
2013	335	292	345	382	356	351	407	361	329	387	313	365



BAJACALIFORNIA

ROSARITO

Variación
2012 vs 2013



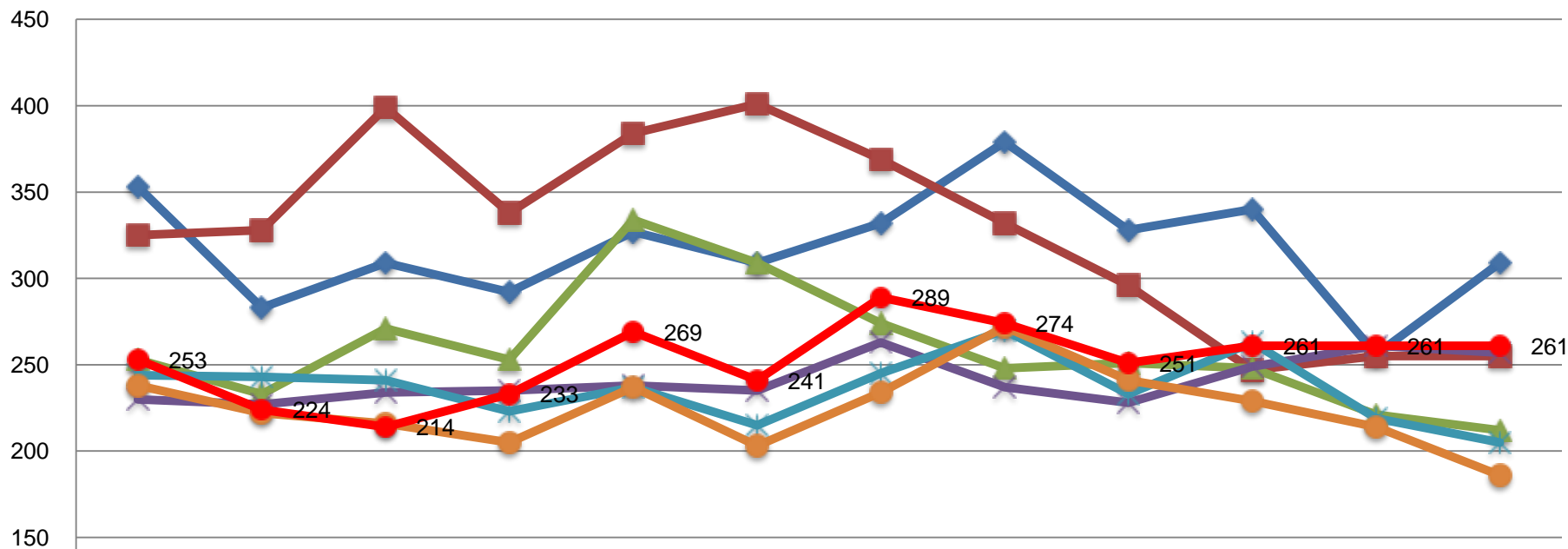
2012

2013



ROSARITO

BAJACALIFORNIA



	Ene	Feb	Mar	Abr	May	Jun	Jul	Ago	Sep	Oct	Nov	Dic
2007	353	283	309	292	327	309	332	379	328	340	256	309
2008	325	328	399	338	384	401	369	332	296	247	255	255
2009	253	233	271	253	334	309	274	248	251	248	221	212
2010	230	227	234	235	238	235	263	237	228	249	261	257
2011	244	243	241	223	237	215	245	270	233	263	219	205
2012	238	222	216	205	237	203	234	272	241	229	214	186
2013	253	224	214	233	269	241	289	274	251	261	261	261